

Scanned Document Notice

This report is a scanned image of the original report. We have included the table of contents only for reference.



You may obtain this report by contacting us directly, however there may be charges associated with the scanning of the original document. Contact us for more details. This report and other related documents can be found at www.mississauga.ca/data

Phone: (905) 615-3200 ext. 5556

Email: eplanbuild.info@mississauga.ca

RSS: <http://feeds.feedburner.com/MississaugaData>

Twitter: www.twitter.com/mississaugadata

Website: www.mississauga.ca/data



common languages spoken other than English include Portuguese (5.4%), Polish (4.7%), Italian (4.5%), and Chinese (3.6%).

Housing Characteristics

According to Mississauga's monitoring system, Erindale consists of approximately 36% detached, 26% semi-detached, 12% townhouses and 26% apartment units, compared to Mississauga's current distribution of 45% detached, 11% semi-detached, 11% townhouses and 33% apartment units.

At the time of the 1991 Census, 73% of one family households owned their homes with the remaining 27% renting. These figures can be compared to the City-wide breakdown of 71% and 29% respectively.

Schools

The Erindale Residential District is currently served by 9 elementary and 4 secondary schools, with a total enrollment of approximately 8981 students.

Community Parks

The Erindale Residential District consists of 16 parks comprising an area of approximately 103 hectares (255 acres). These areas include a broad range of Neighbourhood Parks, Community Parks, City Parkland and Greenbelt lands. Recreational facilities include one community centre, an indoor swimming pool, outdoor sports facilities, and a

public library. The area also includes approximately 3.5 kilometres of the Culham Trail, from Highway 403 to Dundas Street.

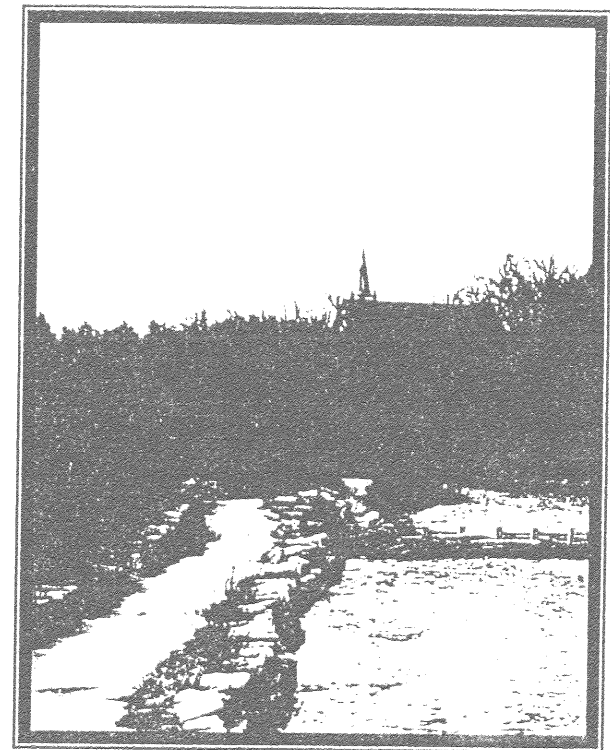
Community Profile Conclusion

Erindale is a well established community and has evolved into a mature area characterized by diverse demographics, a variety of housing, open spaces, recreational facilities, and retail services. As an established area, planning issues will focus largely on potential redevelopment and revitalization of sites throughout the District.

City of Mississauga
Planning and Building Department
Policy Planning Division



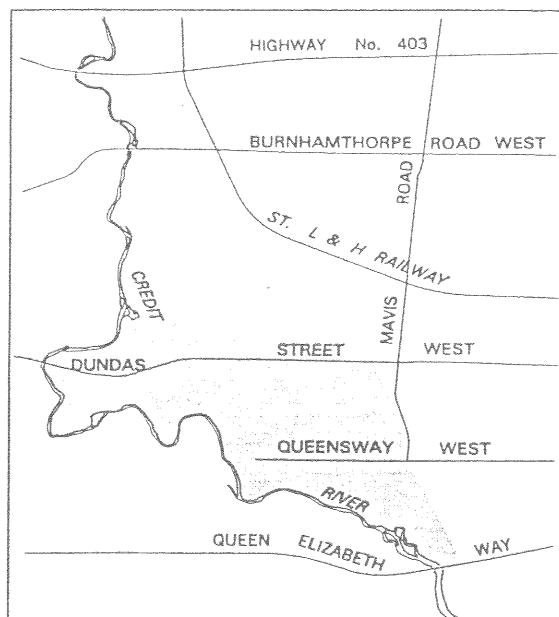
Erindale Residential Community



Community Profile
April 1997

Location

The Erindale Residential District is located in the south western quadrant of the City, to the east of the Credit River and to the south of Highway 403. Its boundaries and major streets are shown on the map below.



History

It was in the early 1820's, after the acquisition of lands from the Mississauga Indians, that the village of Erindale became settled and started to evolve. The first person to settle in Erindale was Thomas Racey who constructed a saw mill in 1825 on the Credit River. At the same time a Scottish

immigrant, Colonel Adamson, settled an estate on the south side of Dundas Street and recruited Reverend James Magrath as the rector of St. Peter's Anglican Church.

By the late 1820's, the village of Erindale was beginning to take shape and served as a stopping place for stage coach travellers between Toronto and Hamilton. It contained not only the Exchange Hotel, but a number of stores, taverns, a sawmill, and a church and burial ground. During the 1850's, however, Erindale suffered with the completion of the Great Western Railway and the decline of traffic along Dundas Street.

It was not until the early 1900's that the village of "Erindale" got its name, after the Magrath estate and to avoid confusion with other towns in Ontario. Prior to this it had been known as "Credit" and "Springfield".

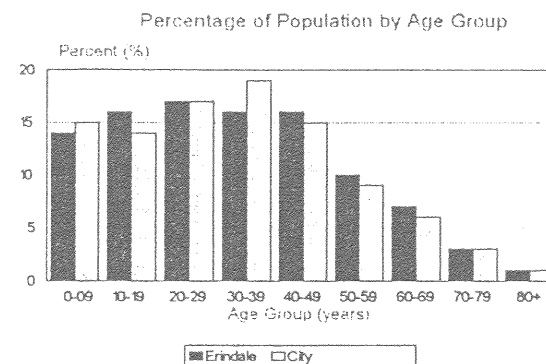
In the mid 1950's the majority of suburban development was limited to the south of Dundas Street. By the late 1950's lands to the north of Dundas Street were beginning to develop with Erindale Woodlands, a 468 acre project to provide over 800 homes, 600 apartments, multiple dwelling units and a shopping complex. Since then the district of Erindale has developed into a well established and mature residential community.

Demographic Profile

According to the 1991 Census of Canada, Erindale had a population of approximately 21,935 persons. In 1991 the largest age group was between 20 - 29

years of age. City projections indicate that Erindale's population will decline to approximately 21,800 persons by the year 2031.

Population



As of 1991, the average family income for Erindale was approximately \$58,100. Low income families, defined as those that require 70% of their income to meet the basic needs of food, clothing and shelter, account for under 9.8% of the total number of families in this community.

Of the families living in Erindale, 74% have children living at home. Thirteen percent of families have lone parents which are predominantly headed by single mothers, and 81% percent of Erindale households consist of one family.

Forty-one percent of Erindale residents are immigrants. British (18.2%), East Indian (6%), Portuguese (6%), Italian (5.3%), Polish (4.8%), and Chinese (3.5%) ethnic origins make up 43.8% of the resident population in Erindale. The most